



# MONTHLY MEMBERSHIP PROGRESS REPORT

District 321A2

Results as of: 05/31/2019

GMT: ANIL TULSYAN

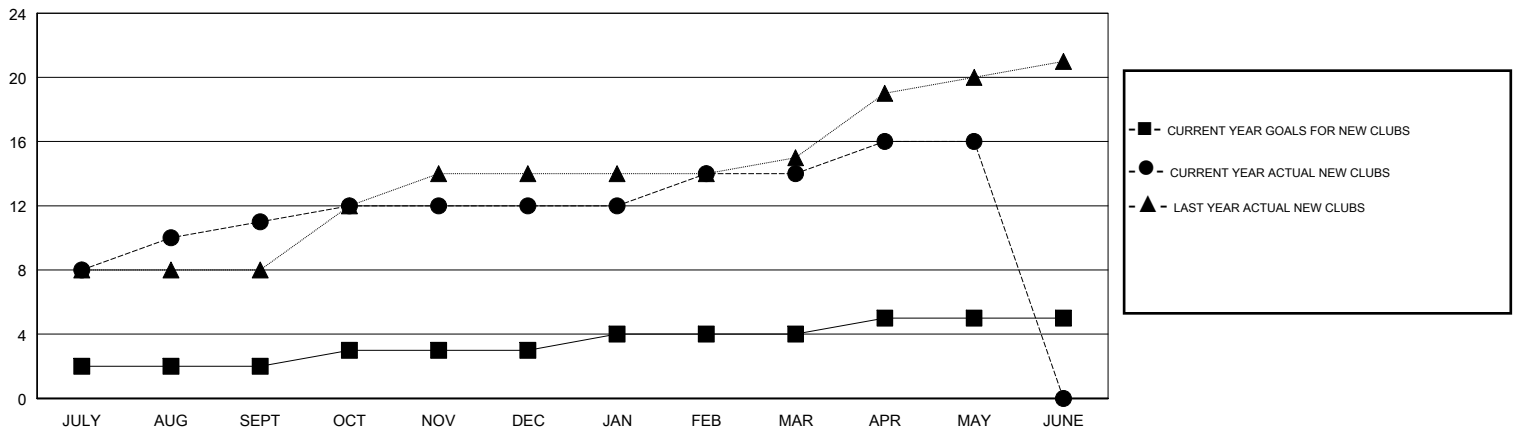
LOCATION INDIA

GMT CA

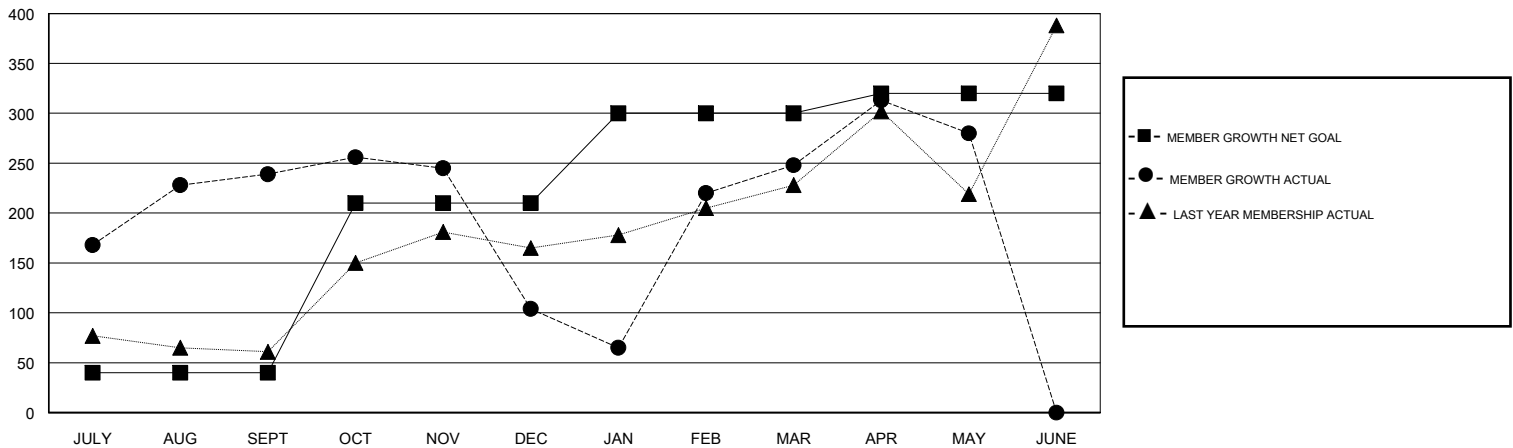
Clubs			
RESULTS FOR 2018-2019			
QUARTER	NEW CLUB GOAL	NEW CLUBS	DROPPED CLUBS
JULY/AUG/SEPT	2	11	0
OCT/NOV/DEC	1	1	3
JAN/FEB/MAR	1	2	1
APR/MAY/JUNE	1	2	0

Members			
RESULTS FOR 2018-2019			
QUARTER	MEMBER GROWTH NET GOAL	MEMBER GROWTH ACTUAL	DROPPED MEMBERS ACTUAL (including transfers)
JULY/AUG/SEPT	40	344	84
OCT/NOV/DEC	170	74	193
JAN/FEB/MAR	90	403	137
APR/MAY/JUNE	20	278	175

GOALS AND ACTUAL NEW CLUBS CUMULATIVE



GOALS AND ACTUAL MEMBERS CUMULATIVE



DROPPED CLUBS: 4	89 CLUBS OF 138 ADDED 1 OR MORE NEW MEMBERS	<u>GENDER DISTRIBUTION</u>	
DROPPED MEMBERS		MALE	2,815 (65.69%)
DECEASED	5	FEMALE	1,470 (34.31%)
CLUB CANCELLED	82	Women Percentage Fiscal Year Goal: 20%	
OTHER	502	TOTAL FAMILY UNIT MEMBERS	2,526
TOTAL	589	FAMILY MEMBERS PAYING HALF DUES	1,430

[CLICK HERE FOR CUMULATIVE MEMBERSHIP DATA](#)